



Ontario Secondary School Teachers' Federation

Dirty Electricity

DIRTY ELECTRICITY

An invisible pollutant in schools

BY MAGDA HAVAS

“AS the school year began in the late summer of 2002, Mindoro Elementary School teacher and principal Angela Olstad was ready to call it quits,” wrote Emily Winter in her article “Dirty electricity at center of debate” that appeared in the Aug. 2, 2006 issue of the Capital Times in Madison, Wisconsin.

“Since Olstad took the job at Mindoro three years earlier, she suffered from chronic illness and was eventually diagnosed with multiple sclerosis in April 2002. Other faculty members reported health problems as well, and 37 Mindoro students had developed asthma.

“Even after treating the school twice for mold, rampant illness persisted and its source remained a mystery.

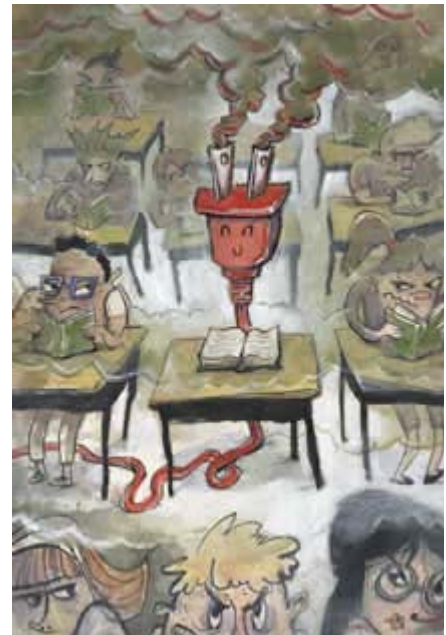
“ ‘I was exhausted. I absolutely had no life for three-and-a-half years’ Olstad said. ‘I was afraid to go back.’

“But all that would change in October 2002,” continued the article.

In October 2002, the superintendent, Ron Perry, invited a power quality expert to measure the school for electrical problems. He found elevated levels of high frequency radiation on the wires in the school (commonly referred to as “dirty electricity”) and installed Graham Stetzer (GS) filters to remove these high frequencies. The staff knew that an electrical contractor was working in the build but were unaware of what work was being done. Within days they began to notice marked improvements in their health.

In a letter posted on the website, www.electricalpollution.com, Char Sbraggia, the district nurse, documented some of these improvements after the GS filters were installed: “Teachers are stating they are less fatigued and tired.... The students seem to have more energy and appear and seem less tired.... Several staff who doctored regularly for allergies have not had to take medication or see the doctors because they are having less problems.... Students who have been diagnosed with migraine headaches have had their headaches reduced, or no headaches at all.”

But perhaps the most impressive result was for students with asthma. Of the 37 students who require nebulizer treatments daily, only three students used inhalers for exercise-induced asthma before physical education classes after the filters were installed.



Two years later the results were the same. Absenteeism, due to illness, was reduced and students continued not to need inhalers and to have a lot of energy. According to district nurse Sbraggia in a follow-up letter on Jan. 14, 2005, "We are a much healthier school since the filters have been installed."

The Wisconsin Department of Health no longer classified the school as a "sick" building and a lawsuit initiated by the teachers' union, was dropped.

Is the Mindoro school unique? No! The problem at the Mindoro school was dirty electricity generated fluorescent lights, computers and typical office equipment like photocopy machines—equipment that present in most North American schools.

I became aware of dirty electricity in 2003, when I was invited to do a study at a Toronto private school for students from Grade 1 to 12 with learning disabilities. A parent concerned about her daughter's health and education initiated this study.

Scientific studies have repeatedly documented an increased risk of childhood leukemia associated with exposure to elevated magnetic fields. For this reason, it is advised that schools not be built near high voltage transmission lines, sub-stations or transformers and that computer stations be reconfigured minimize student exposure to magnetic fields. The Toronto school did not have high magnetic fields but did have high levels of dirty electricity.

Dirty electricity is a power quality problem that the utilities are concerned about because of the damage it does to sensitive electronic equipment, hence the need for computer surge suppressors. 1 GS filters are powerful surge suppressors that reduce dirty electricity in the four to 100 kHz range. According to Guy Leavitt, the superintendent of Blair/Taylor School District in Wisconsin: "We did have a number of electronic failures in the district prior to installing the [GS] filters. Since installing them, we have eliminated nearly all of these types of failures. Over the three-year period we may have saved in the range of \$40,000."

I was unaware of studies showing that dirty electricity was harmful to human health and was skeptical that filters would alleviate the health problems in the school. I agreed to do the research because even a negative result has value in a scientific study.

We designed a wellness questionnaire based on an abbreviated list of symptoms common in radio-wave sickness or electrical hypersensitivity. Electrical hypersensitivity (EHS) was defined by the World Health Organization in 2004 as: "a phenomenon where individuals experience adverse health effects while using or being in the vicinity of devices emanating electric, magnetic, or electromagnetic fields. EHS is a real and sometimes a debilitating problem for the affected persons." Teachers completed the questionnaire at the end of each school day documenting their energy, health, mood and performance and another questionnaire documenting the behaviour of students in their last class of the day. This single blind study lasted six weeks.

When filters were installed, teachers were less tired, less frustrated and less irritable

To my surprise both teachers and students improved when the filters were installed. Teachers were less tired (50 percent); less frustrated (45 percent); less irritable (35 percent). They had better health and more energy (30 percent). During this period they had a greater sense of satisfaction and accomplishment, were more focused and experienced less pain.

Student behaviour also improved with the GS filters, especially in the elementary grades. Fewer students were late for class. It took less time to start class and less time was spent unproductively. Students were better able to focus, they were more active, less disruptive, and needed fewer instructions repeated less frequently. Symptoms often associated with

ADD or ADHD were the behaviours that improved when the filters were installed.

Attention deficit disorder is one of the most common behavioural disorders of childhood—it accounts for two percent to 18 percent of school-aged children—and is increasing at an alarming rate. As of 1996, 2.4 million children in the US were diagnosed with ADD/ADHD, up from 950,000 just six years earlier according to the University of Maryland School of Medicine, in 2002.

An important question that needs to be addressed is, "Is dirty electricity in homes and schools contributing to ADD and ADHD?"

The results for the school in Toronto intrigued me and we repeated it at an elementary, middle and high school in Minnesota in 2005. A total of 45 teachers participated in this study and, because a ne

meter became available (a microsurge meter), we were able to get more detailed information about the dirty electricity in each classroom with and without the GS filters.

Approximately 40 percent of the teachers improved after the GS filters were installed compared with placebo filters. This effect was statistically significant. Elementary student behaviour also improved significantly during this period. High school student behaviour did not change except in the compute labs where the highest amount of dirty electricity was recorded before filters were installed.



Symptoms of radio wave sickness

Neurological: headaches, dizziness, nausea, difficulty concentrating, memory loss, irritability, depression, anxiety, insomnia, fatigue, weakness, tremors, muscle spasms, numbness, tingling, altered reflexes, muscle and joint pain, leg/foot pain, flu-like symptoms, fever. More severe reactions can include seizures, paralysis, psychosis and stroke.

Cardiac: palpitations, arrhythmias, pain or pressure in the chest, low or high blood pressure, slow or fast heart rate, shortness of breath

Respiratory: sinusitis, bronchitis, pneumonia, asthma

Dermatological: skin rash, itching, burning, facial flushing

Ophthalmologic: pain or burning in the eyes, pressure in/behind the eyes, deteriorating vision, floaters, cataracts

Others: digestive problems; abdominal pain; enlarged thyroid, testicular/ovarian pain; dryness of lips, tongue, mouth, eyes; great thirst; dehydration; nosebleeds; internal bleeding; altered sugar metabolism; immune abnormalities; redistribution of metals within the body; hair loss; pain in the teeth; deteriorating fillings; impaired sense of smell; ringing in the ears.

These symptoms resemble symptoms associated with electrical hypersensitivity (EHS). Between three percent and 35 percent of the population may have symptoms of EHS according to The Power Watch Handbook by Alasdair and Jean Philips.

Common sources of Radio Waves (wired and wireless)

Outdoors: broadcast and cellphone antennas, radar, cellphones, pagers, two-way radios

Indoors: cordless telephones and their base units, wireless computers and their base units, wired computers, televisions, microwave ovens, dimmer switches, security systems, remote controls, fax machines, answering machines, assistive listening systems and devices for the hearing impaired, wireless microphones, variable speed motors, transformers, child monitors, electric utility smart meters, signal-broadcasting smoke alarms, some electronic games

Vehicles: CB radios, ignition systems, mobile radar units. The original symptoms listed were published in "No Place To Hide" Volume 3, Number 1, April 2001, "Special Issue on Russian and Ukrainian Research" by Arthur Firstenberg, Editor of The Cellular Phone Taskforce.

Conclusions

I am convinced that dirty electricity is contributing to the ill health of staff and students; that elementary-aged students are the most sensitive; and that this form of pollution may be significantly compromising the learning and working environment in schools. Dirty electricity refers to an electric

signal that deviates from a normal 60-Hertz sine wave. It is generated by modern electronic equipment that isn't properly filtered, by equipment turning on and off and by arcing on electrical wires. Dirty electricity is a ubiquitous pollutant that has long been known to damage sensitive electronic equipment. Its effects on human health are just emerging.

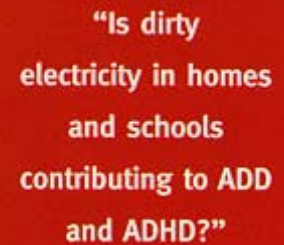
Dirty electricity is a power quality problem and is likely to be present in most schools since they have fluorescent lights, computers and other electronic equipment that generate dirty electricity. Our studies show that young children seem to be the most sensitive to dirty electricity and their behaviour in the classroom improves when this pollutant is removed. Many of the behavioural traits that disappear are those we associated with ADD and ADHD. Students with asthma and teachers with allergies also improve when dirty electricity is reduced in school. Sick building syndrome has been associated with poor indoor air quality but recent evidence suggests that dirty electricity may be a significant contributor to this phenomenon.

Although more research needs to be done, monitoring schools for electromagnetic pollution is an important first step to determine the extent of this pollutant in the school environment. Schools with high absenteeism due to illness are good candidates for initial monitoring. Cleaning up the problem is much less costly than removal of mold and may be a good first step in dealing with sick building syndrome at schools.

Although this article deals exclusively with dirty electricity, another form of electromagnetic pollution that needs to be addressed is radio frequency radiation from wireless technology. The major difference between these two forms of energy is that dirty electricity flows along wires and wireless RF, as the name implies, flows through the air. Antennas on or near school property, wireless computers, wireless microphones in classrooms to help the hearing-impaired—all expose students and education workers to radio frequency radiation. The long-term consequences are poorly understood because our exposure to this technology is so recent. The few studies that are available suggest multiple health and biological effects near cell phone antennas including cancers, symptoms of radio wave sickness and impaired learning in school.

My recommendation is to err on the side of caution. We need to monitor schools for all forms of electromagnetic pollution and to mitigate exposure where levels are high. The health of students and education workers is too important to ignore. Monitoring and mitigating electromagnetic pollution in schools improves the school environment and may reduce ill health and learning difficulties. 🙏

Dr. Magda Havas, BSc, PhD is a professor in Environmental and Resource Studies at Trent University Peterborough.



“Is dirty
electricity in homes
and schools
contributing to ADD
and ADHD?”